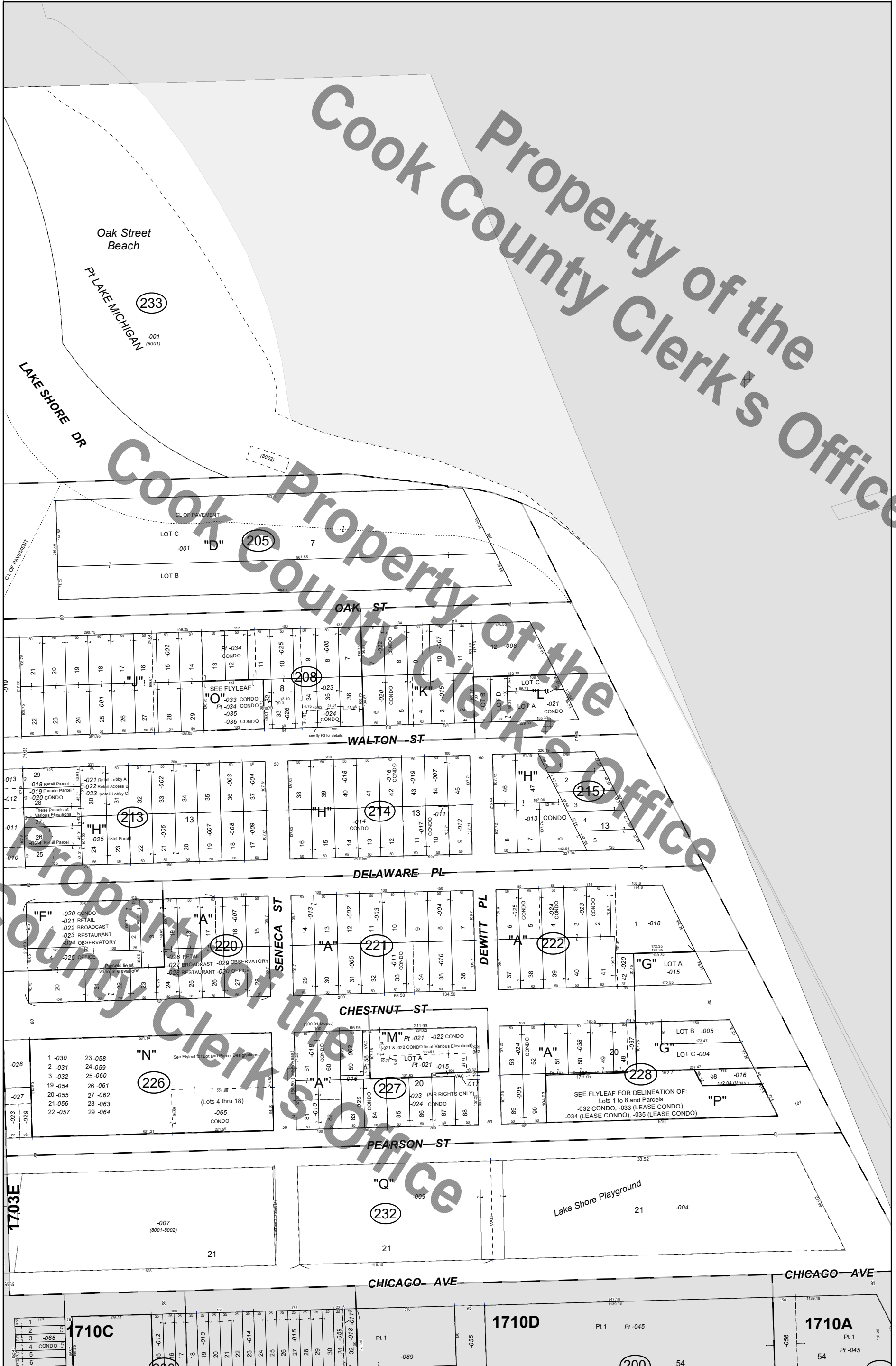




UNOFFICIAL COPY
Cook County, Illinois
E 1/2 SW 1/4 Section 3 - 39 - 14
NORTH





Cook County, Illinois

E 1/2 SW 1/4 Section 3 - 39 - 14 NORTH

© 2024 Cook County, Illinois

CONTINUED

CONDOMINIUM: 17-03-213-020
THE PALMOLIVE BUILDING LANDMARK RESIDENCES CONDO
Rec. 12/01/2005 Doc. 0533510002
Rec. 03/14/2008 Doc. 0807416042

Unit	Unit
11E = 1057	11F = 1058
10A = 1059	10B = 1060
10C = 1061	10D = 1062
10E = 1063	10F = 1064
9A = 1065	9B = 1066
9C = 1067	9D = 1068
9E = 1069	9F = 1070
9G = 1071	8A = 1072
8B = 1073	8C = 1074
8D = 1075	8E = 1076
8F = 1077	8G = 1078
7A = 1079	7B = 1080
7C = 1081	7D = 1082
7E = 1083	7F = 1084
7G = 1085	6A = 1086
6B = 1087	6C = 1088
6D = 1089	6E = 1090
6F = 1091	6G = 1092
30A = 1106	29A = 1107
5A = 1108	5B = 1109
5C = 1110	5E = 1111
5F = 1112	5G = 1113

CONDOMINIUM: 17-03-214-014
200 EAST DELAWARE CONDO.
Rec. 04/25/1973 Doc. 22300553
Rec. 04/04/1974 Doc. 22675697
Rec. 02/22/1977 Doc. 23826487
Rec. 11/01/2017 Doc. 1730506035
Rec. 06/20/2023 Doc. 2317157040

Unit	Unit	Unit
3A = 1001	4A = 1002	5A = 1003
6A = 1004	7A = 1005	8A = 1006
9A = 1007	10A = 1008	11A = 1009
12A = 1010	13A = 1011	14A = 1012
15A = 1013	16A = 1014	17A = 1015
18A = 1016	19A = 1017	20A = 1018
21A = 1019	22A = 1020	23A = 1021
24A = 1022	25A = 1023	27A = 1025
28A = 1026	29A = 1027	30A = 1028
31A = 1029	32A = 1030	33A = 1031
34A = 1032	35A = 1033	3B = 1034
4B = 1035	5B = 1036	6B = 1037
7B = 1038	8B = 1039	9B = 1040
10B = 1041	11B = 1042	12B = 1043
13B = 1044	14B = 1045	15B = 1046
16B = 1047	17B = 1048	18B = 1049
19B = 1050	20B = 1051	21B = 1052
22B = 1053	27B = 1054	28B = 1055
29B = 1056	30B = 1057	31B = 1058
32B = 1059	33B = 1060	35B = 1062
3C = 1063	4C = 1064	5C = 1065
6C = 1066	7C = 1067	8C = 1068
9C = 1069	10C = 1070	11C = 1071
12C = 1072	13C = 1073	14C = 1074
15C = 1075	16C = 1076	17C = 1077
18C = 1078	19C = 1079	20C = 1080
21C = 1081	22C = 1082	23C = 1083
24C = 1084	25C = 1085	27C = 1087
28C = 1088	29C = 1089	30C = 1090
31C = 1091	32C = 1092	33C = 1093
35C = 1095	3D = 1096	4D = 1097
5D = 1098	6D = 1099	7D = 1100
8D = 1101	9D = 1102	10D = 1103
11D = 1104	12D = 1105	13D = 1106
14D = 1107	15D = 1108	16D = 1109
17D = 1110	18D = 1111	19D = 1112
20D = 1113	21D = 1114	22D = 1115
23D = 1116	24D = 1117	25D = 1118
26D = 1119	27D = 1120	28D = 1121
29D = 1122	30D = 1123	31D = 1124
32D = 1125	33D = 1126	34D = 1127
35D = 1128	3E = 1129	4E = 1130
5E = 1131	6E = 1132	7E = 1133
8E = 1134	9E = 1135	11E = 1136
12E = 1137	13E = 1138	14E = 1139
15E = 1140	16E = 1141	17E = 1142
18E = 1143	19E = 1144	20E = 1145
27E = 1146	28E = 1147	29E = 1148
30E = 1149	31E = 1150	32E = 1151
33E = 1152	34E = 1153	35E = 1154
3F = 1155	4F = 1156	5F = 1157
6F = 1158	7F = 1159	8F = 1160
9F = 1161	10F = 1162	11F = 1163
12F = 1164	13F = 1165	14F = 1166
15F = 1167	16F = 1168	17F = 1169
18F = 1170	19F = 1171	20F = 1172
21F = 1173	22F = 1174	23F = 1175
24F = 1176	25F = 1177	26F = 1178
27F = 1179	28F = 1180	29F = 1181
30F = 1182	31F = 1183	32F = 1184
33F = 1185	34F = 1186	35F = 1187
P = 1188	C = 1189	26A = 1190
26C = 1191	34B = 1193	34C = 1194

CONDOMINIUM: 17-03-208-024
210 EAST WALTON CONDOMINIUM
Rec. 04/07/1994 Doc. 94311802

Unit	Unit	Unit	Unit
A = 1001	B = 1002	C = 1003	D = 1004
E = 1005			

CONDOMINIUM: 17-03-208-033
THE 180-190 EAST WALTON GARAGE CONDO.
Rec. 11/14/1996 Doc. 96869218

Unit	Unit	Unit
P-1 = 1001	P-2 = 1002	P-3 = 1003
P-4 = 1004	P-5 = 1005	P-6 = 1006
P-7 = 1007	P-8 = 1008	P-9 = 1009
P-10 = 1010	P-11 = 1011	P-12 = 1012
P-13 = 1013	P-14 = 1014	P-15 = 1015
P-16 = 1016	P-17 = 1017	P-18 = 1018
P-19 = 1019	P-20 = 1020	P-21 = 1021
P-22 = 1022	P-23 = 1023	P-24 = 1024
P-25 = 1025	P-26 = 1026	P-27 = 1027
P-28 = 1028	P-29 = 1029	P-30 = 1030
P-31 = 1031	P-32 = 1032	P-33 = 1033
P-34 = 1034	P-35 = 1035	P-36 = 1036
P-37 = 1037	P-38 = 1038	P-39 = 1039
P-40 = 1040	P-41 = 1041	P-42 = 1042
P-43 = 1043	P-44 = 1044	P-45 = 1045
P-46 = 1046	P-47 = 1047	P-48 = 1048
P-49 = 1049	P-50 = 1050	P-51 = 1051
P-52 = 1052	P-53 = 1053	P-54 = 1054
P-55 = 1055	P-56 = 1056	P-57 = 1057
P-58 = 1058	P-59 = 1059	P-60 = 1060
P-61 = 1061	P-62 = 1062	P-63 = 1063
P-64 = 1064	P-65 = 1065	P-66 = 1066
P-67 = 1067	P-68 = 1068	P-69 = 1069
P-70 = 1070	P-71 = 1071	P-72 = 1072
P-73 = 1073	P-74 = 1074	P-75 = 1075
P-76 = 1076	P-77 = 1077	P-78 = 1078
P-79 = 1079	P-80 = 1080	P-81 = 1081
P-82 = 1082	P-83 = 1083	P-84 = 1084
P-85 = 1085	P-86 = 1086	P-87 = 1087
P-88 = 1088	P-89 = 1089	P-90 = 1090
P-91 = 1091	P-92 = 1092	P-93 = 1093
P-94 = 1094	P-95 = 1095	

CONDOMINIUM: 17-03-208-034
THE MAYFAIR CONDOMINIUM
Rec. 11/14/1996 Doc. 96869217

Unit	Unit	Unit	Unit
19 = 1001	18 = 1002	17 = 1003	16 = 1004
15E = 1005	15W = 1006	14E = 1007	14W = 1008
12E = 1009	12W = 1010	11E = 1011	11W = 1012
10 = 1013	9E = 1014	9W = 1015	8 = 1016
7E = 1017	7W = 1018	6 = 1019	5E = 1020
5W = 1021	4E = 1022	4W = 1023	3E = 1024
3W = 1025	2E = 1026	2W = 1027	1E = 1028
1W = 1029			

CONDOMINIUM: 17-03-208-036
THE REGENT CONDO
Rec. 09/02/1997 Doc. 97640252

Unit	Unit	Unit
201 = 1001	202 = 1002	203 = 1003
301 = 1004	302 = 1005	303 = 1006
401 = 1007	402 = 1008	403 = 1009
501 = 1010	502/602 = 1011	503 = 1012
601 = 1013	603 = 1014	701 = 1015
703 = 1016		

CONDOMINIUM: 17-03-213-020
THE PALMOLIVE BUILDING LANDMARK RESIDENCES CONDO
Rec. 12/01/2005 Doc. 0533510002
Rec. 03/14/2008 Doc. 0807416042

Unit	Unit
PENTHOUSE = 1001	35A = 1002
34A = 1003	33A = 1004
32A = 1005	31A = 1006
28A = 1009	27A = 1010
26A = 1011	25A = 1012
24A = 1013	23A = 1014
22A = 1015	21A = 1016
21B = 1017	20A = 1018
20B = 1019	19A = 1020
19B = 1021	18A = 1022
18B = 1023	17A = 1024
17B = 1025	16A = 1026
16B = 1027	16C = 1028
16D = 1029	16E = 1030
15A = 1031	15B = 1032
15C = 1033	15E = 1034
15F = 1035	14A = 1036
14B = 1037	14C = 1038
14E = 1039	14F = 1040
13A = 1041	13B = 1042
13C = 1043	13D = 1044
13E = 1045	13F = 1046
12A = 1047	12B = 1048
12C = 1049	12D = 1050
12E = 1051	12F = 1052
11A = 1053	11B = 1054
11C = 1055	11D = 1056

CONTINUED

Rec. 11/14/1996 Doc. 96869213

"P"
RESIDENCES ON LAKE SHORE PARK SUB
of part of Lots 91 to 98 in Lake Shore Drive
Add. To Chicago (See "A").

Rec. 06/27/2003 Doc. 0317834088

"Q"
CANAL TRUSTEE'S SUB. of S.Frac'l. 1/4 of
Frac'l. Sec.3-39-14.
Rec. Doc. 9999999999

CONDOMINIUM: 17-03-208-020
220 WALTON PL. CONDOMINIUM
Rec. 05/31/1967 Doc. 20152291

Unit	Unit	Unit
2-E = 1001	2-W = 1002	3-E = 1003
3-W = 1004	4-E = 1005	4-W = 1006
5-E = 1007	5-W = 1008	6-E = 1009
6-W = 1010	7-E = 1011	7-W = 1012
8-E = 1013	8-W = 1014	9-E = 1015
9-W = 1016	10-E = 1017	10-W = 1018
11-E = 1019		

CONDOMINIUM: 17-03-208-021
990 LAKE SHORE DRIVE CONDO.
Rec. 05/30/1973 Doc. 22342070

Unit	Unit	Unit
4A = 1001	4B = 1002	4C = 1003
4D = 1004	4E = 1005	5A = 1006
5B = 1007	5C = 1008	5D = 1009
5E = 1010	6A = 1011	6B = 1012
6C = 1013	6D = 1014	6E = 1015
7A = 1016	7B = 1017	7C = 1018
7D = 1019	7E = 1020	8A = 1021
8B = 1022	8C = 1023	8D = 1024
8E = 1025	9A = 1026	9B = 1027
9C = 1028	9D = 1029	9E = 1030
10A = 1031	10B = 1032	10C = 1033
10D = 1034	10E = 1035	11A = 1036
11B = 1037	11C = 1038	11D = 1039
11E = 1040	12A = 1041	12B = 1042
12C = 1043	12D = 1044	12E = 1045
14A = 1046	14B = 1047	14C = 1048
14D = 1049	14E = 1050	15A = 1051
15B = 1052	15C = 1053	15D = 1054
15E = 1055	16A = 1056	16B = 1057
16C = 1058	16D = 1059	16E = 1060
17A = 1061	17B = 1062	17C = 1063
17D = 1064	17E = 1065	18A = 1066
18B = 1067	18C = 1068	18D = 1069
18E = 1070	19A = 1071	19B = 1072
19C = 1073	19D = 1074	19E = 1075
20A = 1076	20B = 1077	20C = 1078
20D = 1079	20E = 1080	21A = 1081
21B = 1082	21C = 1083	21D = 1084
21E = 1085	22A = 1086	22B = 1087
22C = 1088	22D = 1089	22E = 1090
23A = 1091	23B = 1092	23C = 1093
23D = 1094	23E = 1095	24A = 1096
24B = 1097	24C = 1098	24D = 1099
24E = 1100	25A = 1101	25B = 1102
25C = 1103	25D = 1104	25E = 1105
26A = 1106	26B = 1107	26C = 1108
26D = 1109	26E = 1110	27A = 1111
27B = 1112	27C = 1113	27D = 1114
27E = 1115	28A = 1116	28B = 1117
28C = 1118	28D = 1119	28E = 1120
29A = 1121	29B = 1122	29C = 1123
29D = 1124	29E = 1125	30A = 1126
30B = 1127	30C = 1128	30D = 1129
30E = 1130	31A = 1131	31B = 1132
31C = 1133	31D = 1134	31E = 1135
32A = 1136	32B = 1137	32C = 1138
32D = 1139	32E = 1140	33A = 1141
33B = 1142	33C = 1143	33D = 1144
33E = 1145		

CONDOMINIUM: 17-03-208-022
219 E. LAKE SHORE DR. CONDOMINIUM
Rec. 10/05/1989 Doc. 89471408
Rec. 01/30/1992 Doc. 92062937
Rec. 05/26/1993 Doc. 93400860

Unit	Unit	Unit
2A = 1001	2B/2C = 1002	2D = 1003
3A/3B = 1004	3C = 1005	3D = 1006
4A/4B = 1007	4C = 1008	4D = 1009
5A/5B = 1010	5C = 1011	5D = 1012
6A/6B = 1013	6C = 1014	6D = 1015
8A/8B = 1017	8C = 1018	8D = 1019
10A/10B = 1022	10C/10D = 1023	11A/11B = 1024
11C/11D = 1025	12A/12B = 1026	12C/12D = 1027
9A/B = 1028	9C/D = 1029	7A/B = 1030
7C/D = 1031		



Cook County, Illinois

OFFICIAL COPY

E 1/2 SW 1/4 Section 3 - 39 - 14 NORTH

© 2024 Cook County, Illinois

CONDOMINIUM: 17-03-226-065
180 EAST PEARSON CONDOMINIUM
Rec. 03/29/1976 Doc. 23432350
Rec. 01/22/1978 Doc. 24300283
Rec. 02/08/1989 Doc. 89059748
Rec. 07/19/2007 Doc. 0720015027
Rec. 08/05/2016 Doc. 1621816019
Rec. 11/10/2016 Doc. 1631529076
Rec. 01/28/2020 Doc. 2002817016
Rec. 01/28/2020 Doc. 2002817017

CONTINUED
CONDOMINIUM: 17-03-222-023
THE PLAZA DEWITT CONDOMINIUM
Rec. 09/17/1975 Doc. 23225147
Rec. 04/08/2004 Doc. 0409939050

CONTINUED
CONDOMINIUM: 17-03-222-023
THE PLAZA DEWITT CONDOMINIUM
Rec. 09/17/1975 Doc. 23225147
Rec. 04/08/2004 Doc. 0409939050

CONTINUED
CONDOMINIUM: 17-03-220-020
175 E. DELAWARE PL. CONDOMINIUM
Rec. 08/10/1973 Doc. 22434263
Rec. 03/28/2022 Doc. 2208722025

Unit	Unit	Unit
3301 = 1001	3302 = 1002	3303 = 1003
3304 = 1004	3305 = 1005	3306 = 1006
3307 = 1007	3401 = 1008	3402 = 1009
3406 = 1013	3407 = 1014	3501 = 1015
3502 = 1016	3504 = 1018	3505 = 1019
3506 = 1020	3507 = 1021	3601 = 1022
3602 = 1023	3605 = 1026	3606 = 1027
3607 = 1028	3701 = 1029	3702 = 1030
3703 = 1031	3704 = 1032	3705 = 1033
3706 = 1034	3707 = 1035	3801 = 1036
3802 = 1037	3803 = 1038	3804 = 1039
3805 = 1040	3806 = 1041	3807 = 1042
3901 = 1043	3902 = 1044	3903 = 1045
3904 = 1046	3905 = 1047	3906 = 1048
3907 = 1049	4001 = 1050	4002 = 1051
4003 = 1052	4004 = 1053	4005 = 1054
4006 = 1055	4007 = 1056	4101 = 1057
4102 = 1058	4103 = 1059	4104 = 1060
4105 = 1061	4106 = 1062	4107 = 1063
4201 = 1064	4202 = 1065	4203 = 1066
4204 = 1067	4205 = 1068	4206 = 1069
4207 = 1070	4301 = 1071	4302 = 1072
4303 = 1073	4306 = 1076	4307 = 1077
4401 = 1078	4402 = 1079	4403 = 1080
4404 = 1081	4405 = 1082	4406 = 1083
4407 = 1084	4501 = 1085	4502 = 1086
4503 = 1087	4504 = 1088	4505 = 1089
4506 = 1090	4507 = 1091	4601 = 1092
4602 = 1093	4603 = 1094	4604 = 1095
4605 = 1096	4606 = 1097	4607 = 1098
4701 = 1099	4702 = 1100	4703 = 1101
4704 = 1102	4705 = 1103	4706 = 1104
4707 = 1105	4801 = 1106	4802 = 1107
4803 = 1108	4804 = 1109	4805 = 1110
4806 = 1111	4807 = 1112	4901 = 1113
4902 = 1114	4903 = 1115	4904 = 1116
4905 = 1117	4906 = 1118	4907 = 1119
5001 = 1120	5002 = 1121	5003 = 1122
5004 = 1123	5005 = 1124	5006 = 1125
5007 = 1126	5101 = 1127	5102 = 1128
5103 = 1129	5104 = 1130	5105 = 1131
5106 = 1132	5107 = 1133	5201 = 1134
5202 = 1135	5203 = 1136	5204 = 1137
5205 = 1138	5206 = 1139	5207 = 1140
5301 = 1141	5302 = 1142	5303 = 1143
5304 = 1144	5305 = 1145	5306 = 1146
5401 = 1147	5402 = 1148	5403 = 1149
5404 = 1150	5405 = 1151	5406 = 1152
5501 = 1153	5502 = 1154	5503 = 1155
5504 = 1156	5505 = 1157	5506 = 1158
5604 = 1162	5605 = 1163	5606 = 1164
5701 = 1165	5702 = 1166	5703 = 1167
5704 = 1168	5705 = 1169	5706 = 1170
5802 = 1172	5803 = 1173	5804 = 1174
5805 = 1175	5806 = 1176	5902 = 1178
5903 = 1179	5904 = 1180	5905 = 1181
5906 = 1182	6001 = 1183	6002 = 1184
6003 = 1185	6004 = 1186	6005 = 1187
6006 = 1188	6101 = 1189	6102 = 1190
6103 = 1191	6104 = 1192	6105 = 1193
6106 = 1194	6201 = 1195	6202 = 1196
6203 = 1197	6204 = 1198	6205 = 1199
6206 = 1200	6301 = 1201	6302 = 1202
6305 = 1205	6306 = 1206	6307 = 1207
6401 = 1208	6402 = 1209	6403 = 1210
6404 = 1211	6407 = 1212	6501 = 1213
6502 = 1214	6503 = 1215	6504 = 1216
6505 = 1217	6506 = 1218	6507 = 1219
6601 = 1220	6602 = 1221	6603 = 1222
6604 = 1223	6407 = 1224	6701 = 1225
6702 = 1226	6703 = 1227	6704 = 1228
6705 = 1229	6706 = 1230	6707 = 1231
6801 = 1232	6802 = 1233	6803 = 1234
6804 = 1235	6807 = 1236	6901 = 1237
6902 = 1238	6903 = 1239	6904 = 1240
6906 = 1242	6907 = 1243	7001 = 1244
7002 = 1245	7003 = 1246	7007 = 1248
7101 = 1249	7102 = 1250	7103 = 1251
7104 = 1252	7105 = 1253	7106 = 1254
7107 = 1255	7201 = 1256	7202 = 1257
7203 = 1258	7204 = 1259	7207 = 1260
6905 = 1261	7004 = 1262	5801 = 1263
5901 = 1264	6303-6304 = 1265	3405 = 1266
4304-4305 = 1267	5601 = 1268	5602 = 1269
5603 = 1270		

Unit	Unit	Unit
3704 = 1355	3705 = 1356	3706 = 1357
3707 = 1358	3801 = 1359	3802 = 1360
3803 = 1361	3804 = 1362	3805 = 1363
3806 = 1364	3807 = 1365	3901 = 1366
3902 = 1367	3903 = 1368	3904 = 1369
3905 = 1370	3906 = 1371	3907 = 1372
4001 = 1373	4002 = 1374	4003 = 1375
4004 = 1376	4005 = 1377	4006 = 1378
4007 = 1379	4101 = 1380	4102 = 1381
4103 = 1382	4104 = 1383	4105 = 1384
4106 = 1385	4107 = 1386	4201 = 1387
4202 = 1388	4203 = 1389	4204 = 1390
4205 = 1391	4206 = 1392	4207 = 1393
4302 = 1395	4304 = 1397	4305 = 1398
4306 = 1399	4307 = 1400	4401 = 1401
4402 = 1402	4403 = 1403	4404 = 1404
4405 = 1405	4406 = 1406	4407 = 1407
COM.1 = 1408	COM.2 = 1409	COM.3 = 1410
COM.4 = 1411	COM.5 = 1412	4301 = 1413
4303 = 1414		

Unit	Unit	Unit
709 = 1061	710 = 1062	711 = 1063
712 = 1064	714 = 1065	801 = 1066
802 = 1067	803 = 1068	804 = 1069
805 = 1070	806 = 1071	807 = 1072
808 = 1073	809 = 1074	810 = 1075
811 = 1076	812 = 1077	814 = 1078
901 = 1079	902 = 1080	903 = 1081
904 = 1082	905 = 1083	906 = 1084
907 = 1085	908 = 1086	909 = 1087
910 = 1088	911 = 1089	912 = 1089
914 = 1091	1001 = 1092	1002 = 1093
1003 = 1094	1004 = 1095	1005 = 1096
1006 = 1097	1007 = 1098	1008 = 1099
1009 = 1100	1010 = 1101	1011 = 1102
1012 = 1103	1014 = 1104	1101 = 1105
1102 = 1106	1103 = 1107	1104 = 1108
1105 = 1109	1106 = 1110	1107 = 1111
1108 = 1112	1109 = 1113	1110 = 1114
1111 = 1115	1112 = 1116	1114 = 1117
1201 = 1118	1202 = 1119	1203 = 1120
1204 = 1121	1205 = 1122	1206 = 1123
1207 = 1124	1208 = 1125	1209 = 1126
1210 = 1127	1211 = 1128	1212 = 1129
1214 = 1130	1401 = 1131	1402 = 1132
1403 = 1133	1404 = 1134	1405 = 1135
1406 = 1136	1407 = 1137	1408 = 1138
1409 = 1139	1410 = 1140	1411 = 1141
1412 = 1142	1414 = 1143	1501 = 1144
1502 = 1145	1503 = 1146	1504 = 1147
1505 = 1148	1506 = 1149	1507 = 1150
1508 = 1151	1509 = 1152	1510 = 1153
1511 = 1154	1512 = 1155	1514 = 1156
1601 = 1157	1602 = 1158	1603 = 1159
1604 = 1160	1605 = 1161	1606 = 1162
1607 = 1163	1608 = 1164	1609 = 1165
1610 = 1166	1611 = 1167	1612 = 1168
1614 = 1169	1701 = 1170	1702 = 1171
1703 = 1172	1704 = 1173	1705 = 1174
1706 = 1175	1707 = 1176	1708 = 1177
1709 = 1178	1710 = 1179	1711 = 1180
1712 = 1181	1714 = 1182	1801 = 1183
1802 = 1184	1803 = 1185	1804 = 1186
1805 = 1187	1806 = 1188	1807 = 1189
1808 = 1190	1809 = 1191	1810 = 1192
1811 = 1193	1812 = 1194	1814 = 1195
1901 = 1196	1902 = 1197	1903 = 1198
1904 = 1199	1905 = 1200	1906 = 1201
1907 = 1202	1908 = 1203	1909 = 1204
1910 = 1205	1911 = 1206	1912 = 1207
1914 = 1208	2001 = 1209	2002 = 1210
2003 = 1211	2004 = 1212	2005 = 1213
2006 = 1214	2007 = 1215	2008 = 1216
2009 = 1217	2010 = 1218	2011 = 1219
2012 = 1220	2014 = 1221	2101 = 1222
2102 = 1223	2103 = 1224	2104 = 1225
2105 = 1226	2106 = 1227	2107 = 1228
2108 = 1229	2109 = 1230	2110 = 1231
2111 = 1232	2112 = 1233	2114 = 1234
2201 = 1235	2202 = 1236	2203 = 1237
2204 = 1238	2205 = 1239	2206 = 1240
2207 = 1241	2208 = 1242	2209 = 1243
2210 = 1244	2211 = 1245	2212 = 1246
2214 = 1247	2301 = 1248	2302 = 1249
2303 = 1250	2304 = 1251	2305 = 1252
2306 = 1253	2307 = 1254	2308 = 1255
2309 = 1256	2310 = 1257	2311 = 1258
2312 = 1259	2314 = 1260	2401 = 1261
2402 = 1262	2403 = 1263	2404 = 1264
2405 = 1265	2406 = 1266	2407 = 1267
2501 = 1268	2502 = 1269	2503 = 1270
2504 = 1271	2505 = 1272	2506 = 1273
2507 = 1274	2601 = 1275	2602 = 1276
2603 = 1277	2604 = 1278	2605 = 1279
2606 = 1280	2607 = 1281	2701 = 1282
2702 = 1283	2703 = 1284	2704 = 1285
2705 = 1286	2706 = 1287	2707 = 1288
2801 = 1289	2802 = 1290	2803 = 1291
2804 = 1292	2805 = 1293	2806 = 1294
2807 = 1295	2901 = 1296	2902 = 1297
2903 = 1298	2904 = 1299	2905 = 1300
2906 = 1301	2907 = 1302	3001 = 1303
3002 = 1304	3003 = 1305	3004 = 1306
3005 = 1307	3006 = 1308	3007 = 1309
3101 = 1310	3102 = 1311	3103 = 1312
3104 = 1313	3105 = 1314	3106 = 1315
3107 = 1316	3201 = 1317	3202 = 1318
3203 = 1319	3204 = 1320	3205 = 1321
3206 = 1322	3207 = 1323	3301 = 1324
3302 = 1325	3303 = 1326	3304 = 1327
3305 = 1328	3306 = 1329	3307 = 1330
3401 = 1331	3402 = 1332	3403 = 1333
3404 = 1334	3405 = 1335	3406 = 1336
3407 = 1337	3501 = 1338	3502 = 1339
3503 = 1340	3504 = 1341	3505 = 1342
3506 = 1343	3507 = 1344	3601 = 1345
3602 = 1346	3603 = 1347	3604 = 1348
3605 = 1349	3606 = 1350	3607 = 1351
3701 = 1352	3702 = 1353	3703 = 1354

Unit	Unit	Unit
7902 = 1559	7903 = 1560	7904 = 1561
7905 = 1562	7906 = 1563	7907 = 1564
7908 = 1565	7909 = 1566	7910 = 1567
7911 = 1568	7912 = 1569	8001 = 1570
8002 = 1571	8003 = 1572	8004 = 1573
8005 = 1574	8006 = 1575	8007 = 1576
8008 = 1577	8009 = 1578	8010 = 1579
8011 = 1580	8012 = 1581	8101 = 1582
8102 = 1583	8103 = 1584	8104 = 1585
8105 = 1586	8106 = 1587	8107 = 1588
8108 = 1589	8109 = 1590	8110 = 1591
8111 = 1592	8112 = 1593	8201 = 1594
8202 = 1595	8203 = 1596	8204 = 1597
8205 = 1598	8206 = 1599	8207 = 1600
8208 = 1601	8209 = 1602	8210 = 1603
8301 = 1604	8302 = 1605	8303 = 1606
8304 = 1607	8305 = 1608	8306 = 1609
8307 = 1610	8308 = 1611	8309 = 1612
8310 = 1613	8401 = 1614	8402 = 1615
8403 = 1616	8404 = 1617	8405 = 1618
8406 = 1619	8407 = 1620	8408 = 1621



Cook County, Illinois

OFFICIAL COPY

E 1/2 SW 1/4 Section 3 - 39 - 14

NORTH

CONTINUED

CONDOMINIUM: 17-03-228-032
Pearson Condominium

Rec. 06/27/2003 Doc. 0317834093
Rec. 08/13/2003 Doc. 0322518015
Rec. 10/24/2017 Doc. 1729729032
Rec. 04/18/2018 Doc. 1810844036

Unit	Unit	Unit
2203 = 1102	2204 = 1103	2205 = 1104
2206 = 1105	2301 = 1106	2302 = 1107
2304 = 1109	2306 = 1111	2401 = 1112
2402 = 1113	2403 = 1114	2404 = 1115
2405 = 1116	2406 = 1117	2501 = 1118
2502 = 1119	2503 = 1120	2504 = 1121
2505 = 1122	2506 = 1123	2601 = 1124
2602 = 1125	2604 = 1126	2605 = 1127
2606 = 1128	2701 = 1129	2702 = 1130
2703 = 1131	2704 = 1132	2705 = 1133
2706 = 1134	2801 = 1135	2802 = 1136
2803 = 1137	2804 = 1138	2805 = 1139
2806 = 1140	2901 = 1141	2902 = 1142
2903 = 1143	2904 = 1144	2905 = 1145
2906 = 1146	3001 = 1147	3002 = 1148
3003 = 1149	3004 = 1150	3005 = 1151
3006 = 1152	3101 = 1153	3102 = 1154
3103 = 1155	3104 = 1156	3105 = 1157
3106 = 1158	3201 = 1159	3202 = 1160
3203 = 1161	3204 = 1162	3205 = 1163
3206 = 1164	3301 = 1165	3302 = 1166
3303 = 1167	3304 = 1168	3305 = 1169
3306 = 1170	3401 = 1171	3402 = 1172
3403 = 1173	3404 = 1174	3405 = 1175
3406 = 1176	3501 = 1177	3502 = 1178
3503 = 1179	2305 = 1180	1805 = 1181

CONDOMINIUM: 17-03-228-033
840 North Lake Shore Drive Condominium

Rec. 09/11/2003 Doc. 0325432161
Rec. 09/14/2005 Doc. 0525732010
Rec. 05/03/2006 Doc. 0612331099

Unit	Unit	Unit
None = 4000	101 = 4001	201 = 4002
301 = 4005	401 = 4008	402 = 4009
403 = 4010	501 = 4011	502 = 4012
503 = 4013	601 = 4014	602 = 4015
603 = 4016	701 = 4017	702 = 4018
703 = 4019	801 = 4020	802 = 4021
803 = 4022	901 = 4023	902 = 4024
903 = 4025	1001 = 4026	1002 = 4027
1003 = 4028	1101 = 4029	1102 = 4030
1103 = 4031	1201 = 4032	1202 = 4033
1203 = 4034	1301 = 4035	1302 = 4036
1303 = 4037	1401 = 4038	1403 = 4039
1501 = 4040	1502 = 4041	1503 = 4042
1601 = 4043	1602 = 4044	1603 = 4045
1701 = 4046	1702 = 4047	1703 = 4048
1801 = 4049	1802 = 4050	1803 = 4051
1901 = 4052	1902 = 4053	1903 = 4054
2001 = 4055	2002 = 4056	2003 = 4057
2101 = 4058	2102 = 4059	2103 = 4060
2201 = 4061	2202 = 4062	2203 = 4063
2401 = 4067	2402 = 4068	2403 = 4069
2501 = 4070	2502 = 4071	P1 = 4073
P2 = 4074	P3 = 4075	P4 = 4076
P5 = 4077	P7 = 4078	P8 = 4079
P9 = 4080	P10 = 4081	P11 = 4082
P12 = 4083	P13 = 4084	P14 = 4085
P15 = 4086	P16 = 4087	P17 = 4088
P18 = 4089	P19 = 4090	P20 = 4091
P21 = 4092	P22 = 4093	P23 = 4094
P24 = 4095	P25 = 4096	P26 = 4097
P27 = 4098	P28 = 4099	P29 = 4100
P30 = 4101	P31 = 4102	P32 = 4103
P33 = 4104	P34 = 4105	P35 = 4106
P36 = 4107	P37 = 4108	P38 = 4109
P39 = 4110	P40 = 4111	P41 = 4112
P42 = 4113	P43 = 4114	P44 = 4115
P45 = 4116	P46 = 4117	P47 = 4118
P48 = 4119	P49 = 4120	P50 = 4121
P51 = 4122	P52 = 4123	P53 = 4124
P54 = 4125	P55 = 4126	P56 = 4127
P57 = 4128	P58 = 4129	P59 = 4130
P60 = 4131	P61 = 4132	P62 = 4133
P63 = 4134	P64 = 4135	P65 = 4136
P66 = 4137	P67 = 4138	P68 = 4139
P69 = 4140	P70 = 4141	P71 = 4142
P72 = 4143	P73 = 4144	P74 = 4145
P75 = 4146	P76 = 4147	P77 = 4148
P78 = 4149	P79 = 4150	P80 = 4151
P81 = 4152	P82 = 4153	P83 = 4154
P84 = 4155	P85 = 4156	P86 = 4157
P87 = 4158	P88 = 4159	P89 = 4160
P90 = 4161	P91 = 4162	P92 = 4163
P93 = 4164	P94 = 4165	P95 = 4166
P96 = 4167	P97 = 4168	P98 = 4169
P99 = 4170	P100 = 4171	P101 = 4172
P102 = 4173	P103 = 4174	P104 = 4175
P105 = 4176	P106 = 4177	P107 = 4178
P108 = 4179	P109 = 4180	P110 = 4181
P111 = 4182	P112 = 4183	P113 = 4184
P114 = 4185	P115 = 4186	P116 = 4187
P117 = 4188	P118 = 4189	P119 = 4190
P120 = 4191	P121 = 4192	P122 = 4193
P123 = 4194	P124 = 4195	P125 = 4196
P126 = 4197	P127 = 4198	P128 = 4199
P129 = 4200	P130 = 4201	202 = 4202

CONTINUED

CONDOMINIUM: 17-03-227-024
222 EAST PEARSON CONDO

Rec. 12/06/2005 Doc. 0534018034

Unit	Unit	Unit
2004 = 1157	2005 = 1158	2006 = 1159
2007 = 1160	2008 = 1161	2009 = 1162
2101 = 1163	2102 = 1164	2103 = 1165
2104 = 1166	2105 = 1167	2106 = 1168
2107 = 1169	2108 = 1170	2109 = 1171
2201 = 1172	2202 = 1173	2203 = 1174
2204 = 1175	2205 = 1176	2206 = 1177
2207 = 1178	2208 = 1179	2209 = 1180
2301 = 1181	2302 = 1182	2303 = 1183
2304 = 1184	2305 = 1185	2306 = 1186
2307 = 1187	2308 = 1188	2309 = 1189
2401 = 1190	2402 = 1191	2403 = 1192
2404 = 1193	2405 = 1194	2406 = 1195
2407 = 1196	2408 = 1197	2409 = 1198
2501 = 1199	2502 = 1200	2503 = 1201
2504 = 1202	2505 = 1203	2506 = 1204
2507 = 1205	2508 = 1206	2509 = 1207
2601 = 1208	2602 = 1209	2603 = 1210
2604 = 1211	2605 = 1212	2606 = 1213
2701 = 1214	2702 = 1215	2705 = 1216
2706 = 1217	COMM-A = 1218	COMM-B = 1219

CONDOMINIUM: 17-03-228-024
247 E. CHESTNUT CONDOMINIUM

Rec. 06/12/1973 Doc. 22356920
Rec. 08/26/2014 Doc. 1423813048

Unit	Unit	Unit
401 = 1001	501 = 1002	601 = 1003
701 = 1004	801 = 1005	901 = 1006
1001 = 1007	1101 = 1008	1201 = 1009
1301 = 1010	1401 = 1011	1501 = 1012
1601 = 1013	1701 = 1014	1801 = 1015
1901 = 1016	2001 = 1017	2101 = 1018
2201 = 1019	2301 = 1020	2401 = 1021
402 = 1023	502 = 1024	602 = 1025
702 = 1026	802 = 1027	902 = 1028
1002 = 1029	1102 = 1030	1202 = 1031
1302 = 1032	1402 = 1033	1502 = 1034
1602 = 1035	1702 = 1036	1802 = 1037
1902 = 1038	2002 = 1039	2102 = 1040
2202 = 1041	2302 = 1042	2402 = 1043
2502 = 1044	403 = 1045	503 = 1046
703 = 1047	803 = 1048	903 = 1049
1003 = 1050	1103 = 1051	1203 = 1052
1303 = 1053	1403 = 1054	1503 = 1055
1603 = 1056	1703 = 1057	1803 = 1058
1903 = 1059	2003 = 1060	2103 = 1061
2203 = 1062	2303 = 1063	2403 = 1064
404 = 1066	504 = 1067	604 = 1068
704 = 1069	804 = 1070	904 = 1071
1004 = 1072	1104 = 1073	1204 = 1074
1304 = 1075	1404 = 1076	1504 = 1077
1604 = 1078	1704 = 1079	1804 = 1080
1904 = 1081	2004 = 1082	2104 = 1083
2204 = 1084	2304 = 1085	2404 = 1086
2504 = 1087	2601 = 1088	2501 = 1089
2503 = 1090		

CONDOMINIUM: 17-03-228-032
Pearson Condominium

Rec. 06/27/2003 Doc. 0317834093
Rec. 08/13/2003 Doc. 0322518015
Rec. 10/24/2017 Doc. 1729729032
Rec. 04/18/2018 Doc. 1810844036

Unit	Unit	Unit
101 = 1001	701 = 1002	702 = 1003
703 = 1004	704 = 1005	801 = 1006
802 = 1007	803 = 1008	804 = 1009
805 = 1010	806 = 1011	807 = 1012
901 = 1013	902 = 1014	903 = 1015
904 = 1016	905 = 1017	906 = 1018
907 = 1019	1001 = 1020	1002 = 1021
1003 = 1022	1004 = 1023	1005 = 1024
1006 = 1025	1007 = 1026	1101 = 1027
1102 = 1028	1103 = 1029	1104 = 1030
1105 = 1031	1106 = 1032	1107 = 1033
1201 = 1034	1202 = 1035	1203 = 1036
1204 = 1037	1205 = 1038	1206 = 1039
1207 = 1040	1301 = 1041	1302 = 1042
1303 = 1043	1304 = 1044	1305 = 1045
1306 = 1046	1307 = 1047	1401 = 1048
1402 = 1049	1403 = 1050	1404 = 1051
1405 = 1052	1406 = 1053	1407 = 1054
1501 = 1055	1502 = 1056	1503 = 1057
1504 = 1058	1505 = 1059	1506 = 1060
1507 = 1061	1601 = 1062	1602 = 1063
1603 = 1064	1604 = 1065	1605 = 1066
1606 = 1067	1607 = 1068	1701 = 1069
1702 = 1070	1703 = 1071	1704 = 1072
1705 = 1073	1706 = 1074	1707 = 1075
1801 = 1076	1802 = 1077	1803 = 1078
1804 = 1079	1805 = 1080	1806 = 1081
1903 = 1084	1904 = 1085	1905 = 1086
1906 = 1087	2001 = 1088	2002 = 1089
2003 = 1090	2004 = 1091	2005 = 1092
2006 = 1093	2101 = 1094	2102 = 1095
2103 = 1096	2104 = 1097	2105 = 1098
2106 = 1099	2201 = 1100	2202 = 1101

CONTINUED

CONDOMINIUM: 17-03-227-022
850 DEWITT PL. CONDOMINIUM

Rec. None Doc. 2284220
Rec. 09/25/1978 Doc. 24641583
Rec. 02/22/1980 Doc. 25370599
Rec. 06/14/2006 Doc. 0616531027
Rec. 08/15/2007 Doc. 0722739178
Rec. 09/26/2017 Doc. 1726945040

Unit	Unit	Unit	Unit
7G = 1053	7H = 1054	7I = 1055	7J = 1056
7K = 1057	8A = 1058	8B = 1059	8C = 1060
8D = 1061	8E = 1062	8F = 1063	8G = 1064
8H = 1065	8J = 1066	8K = 1067	8L = 1068
9AC = 1069	9B = 1070	9D = 1071	9E = 1072
9F = 1073	9G = 1074	9H = 1075	9I = 1076
9J = 1077	9K = 1078	10AC = 1079	10B = 1080
10D = 1081	10E = 1082	10F = 1083	10G = 1084
10H = 1085	10I = 1086	10J = 1087	10K = 1088
11A = 1089	11B = 1090	11C = 1091	11D = 1092
11E = 1093	11F = 1094	11G = 1095	11H = 1096
11I = 1097	11J = 1098	11K = 1099	12A = 1100
12B = 1101	12C = 1102	12D = 1103	12E = 1104
12F = 1105	12G = 1106	12H = 1107	12I = 1108
12J = 1109	12K = 1110	13A = 1111	13B = 1112
13C = 1113	13D = 1114	13E = 1115	13F = 1116
13G = 1117	13H = 1118	13I = 1119	13J = 1120
13K = 1121	14AC = 1122	14B = 1123	14D = 1124
14E = 1125	14F = 1126	14G = 1127	14H = 1128
14I = 1129	14J = 1130	14K = 1131	15B = 1133
15D = 1135	15E = 1136	15F = 1137	15G = 1138
15H = 1139	15I = 1140	15J = 1141	15K = 1142
16AC = 1143	16B = 1144	16D = 1145	16E = 1146
16F = 1147	16G = 1148	16H = 1149	16I = 1150
16J = 1151	16K = 1152	17B = 1154	17D = 1155
17F = 1156	17G = 1157	17H = 1158	17I = 1159
17I = 1160	17J = 1161	17K = 1162	18C = 1165
18E = 1167	18G = 1169	18H = 1170	18I = 1171
18J = 1172	18K = 1173	19A = 1174	19B = 1175
19C = 1176	19D = 1177	19E = 1178	19F = 1179
19G = 1180	19H = 1181	19I = 1182	19J = 1183
19K = 1184	20A = 1185	20B = 1186	20C = 1187



E 1/2 SW 1/4 Section 3 - 39 - 14 NORTH

CONTINUED

CONDOMINIUM: 17-03-228-033
840 North Lake Shore Drive Condominium
Rec. 09/11/2003 Doc. 0325432161
Rec. 09/14/2005 Doc. 0525732010
Rec. 05/03/2006 Doc. 0612331099

Table with 3 columns: Unit, Unit, Unit. Rows include 203 = 4203, 2303 = 4207, 2302 = 4210, 302 = 4204, 2601 = 4208, 303 = 4205, 2301 = 4209.

CONDOMINIUM: 17-03-228-034
The Belvedere Condo
Rec. 05/20/2004 Doc. 0414131100
Rec. 06/02/2009 Doc. 0915318096
Rec. 02/03/2014 Doc. 1403410090

Table with 3 columns: Unit, Unit, Unit. Rows include None = 4000, 202 = 4003, 302 = 4006, 402 = 4009, 502 = 4012, 602 = 4015, 703 = 4019, 903 = 4025, 1003 = 4028, 1103 = 4031, 1203 = 4034, 1401 = 4037, 1502 = 4040, 803 = 4044, 101 = 4001, 203 = 4004, 303 = 4007, 403 = 4010, 503 = 4013, 603 = 4016, 901 = 4023, 1001 = 4026, 1101 = 4029, 1201 = 4032, 1301 = 4035, 1402 = 4038, 16PH-East = 4041, 801 = 4045, 201 = 4002, 301 = 4005, 401 = 4008, 501 = 4011, 601 = 4014, 702 = 4018, 902 = 4024, 1002 = 4027, 1102 = 4030, 1202 = 4033, 1302 = 4036, 1501 = 4039, 16PH-West = 4042.

CONDOMINIUM: 17-03-228-035
270 East Pearson Garage Condo
Rec. 05/20/2004 Doc. 0414131101

Table with 3 columns: Unit, Unit, Unit. Rows include None = 4000, PU3 = 4003, PU6 = 4006, PU9 = 4009, PU12 = 4012, PU15 = 4015, PU18 = 4018, PU21 = 4021, PU24 = 4024, PU27 = 4027, PU30 = 4030, PU33 = 4033, PU36 = 4036, PU39 = 4039, PU42 = 4042, PU45 = 4045, PU48 = 4048, PU51 = 4051, PU54 = 4054, PU57 = 4057, PU60 = 4060, PU63 = 4063, PU66 = 4066, PU69 = 4069, PU72 = 4072, PU75 = 4075, PU78 = 4078, PU81 = 4081, PU84 = 4084, PU87 = 4087, PU90 = 4090, PU1 = 4001, PU4 = 4004, PU7 = 4007, PU10 = 4010, PU13 = 4013, PU16 = 4016, PU19 = 4019, PU22 = 4022, PU25 = 4025, PU28 = 4028, PU31 = 4031, PU34 = 4034, PU37 = 4037, PU40 = 4040, PU43 = 4043, PU46 = 4046, PU49 = 4049, PU52 = 4052, PU55 = 4055, PU58 = 4058, PU61 = 4061, PU64 = 4064, PU67 = 4067, PU70 = 4070, PU73 = 4073, PU76 = 4076, PU79 = 4079, PU82 = 4082, PU85 = 4085, PU88 = 4088, PU91 = 4091, PU2 = 4002, PU5 = 4005, PU8 = 4008, PU11 = 4011, PU14 = 4014, PU17 = 4017, PU20 = 4020, PU23 = 4023, PU26 = 4026, PU29 = 4029, PU32 = 4032, PU35 = 4035, PU38 = 4038, PU41 = 4041, PU44 = 4044, PU47 = 4047, PU50 = 4050, PU53 = 4053, PU56 = 4056, PU59 = 4059, PU62 = 4062, PU65 = 4065, PU68 = 4068, PU71 = 4071, PU74 = 4074, PU77 = 4077, PU80 = 4080, PU83 = 4083, PU86 = 4086, PU89 = 4089, PU92 = 4092.

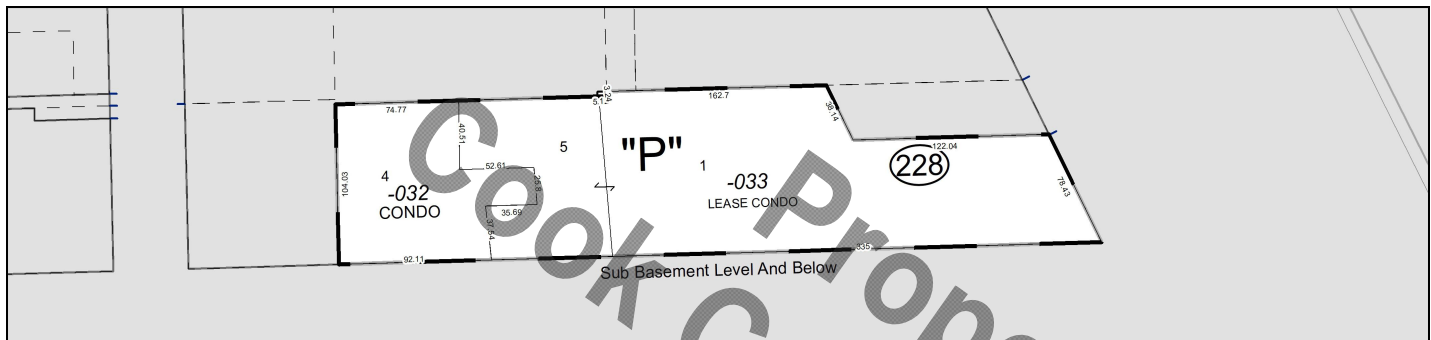
Property of the Cook County Clerk's Office

Property of the Cook County Clerk's Office

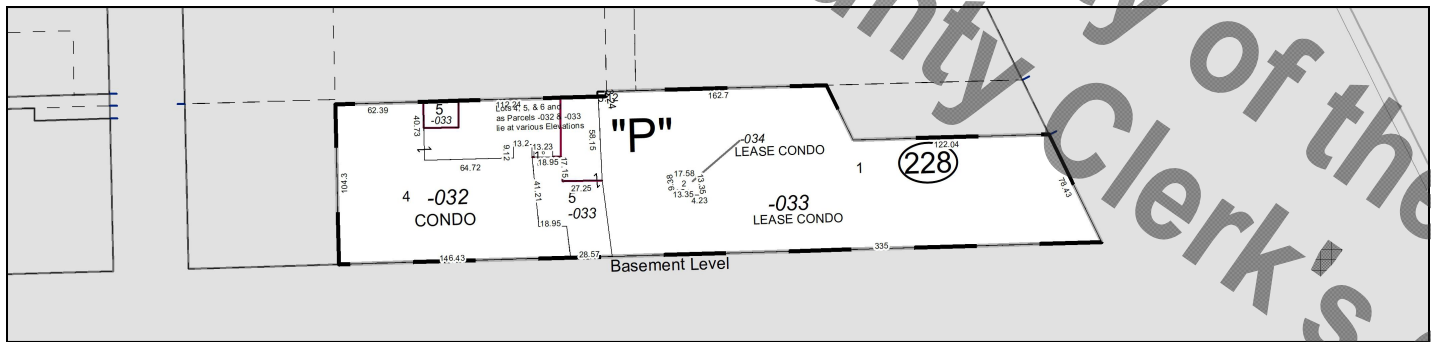


COOK COUNTY, ILLINOIS
UNOFFICIAL COPY
 E $\frac{1}{2}$ SW $\frac{1}{4}$ Section 3 - 39 - 14
 NORTH

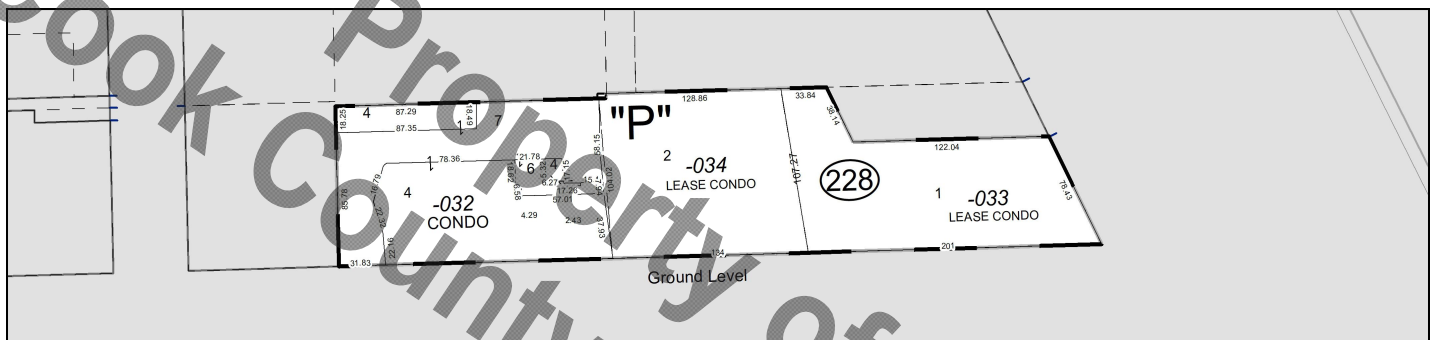
Building: 469, Floor: -2.0



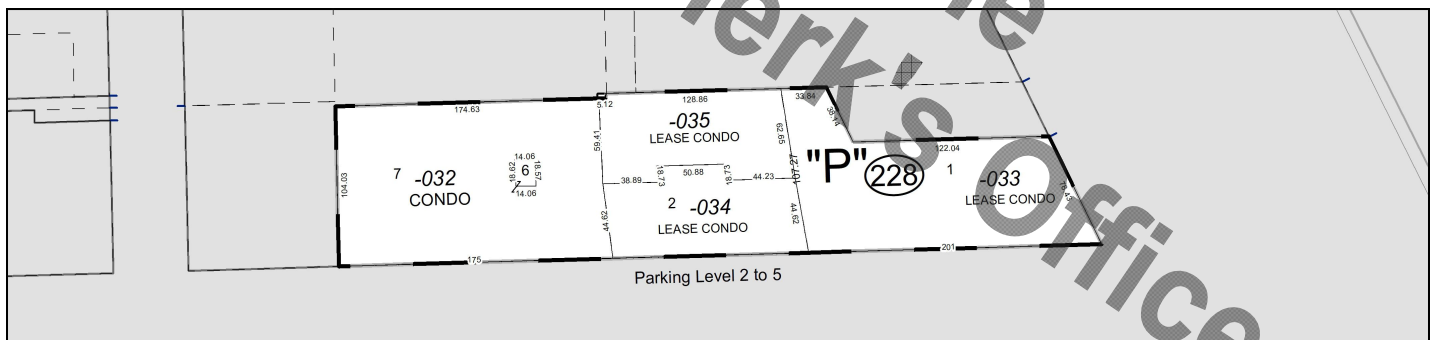
Building: 469, Floor: -1.0



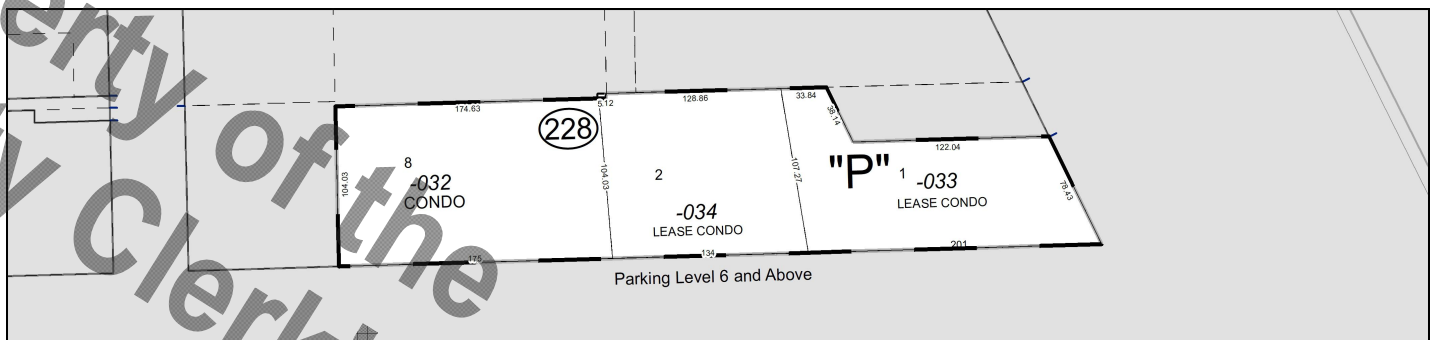
Building: 469, Floor: 0.0



Building: 469, Floor: 2.0

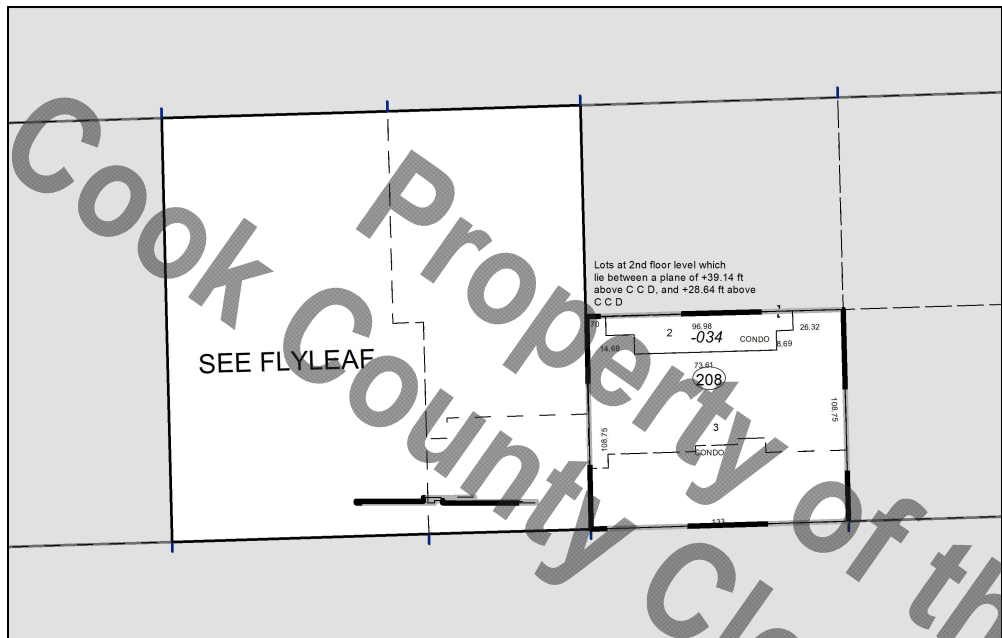


Building: 469, Floor: 6.0

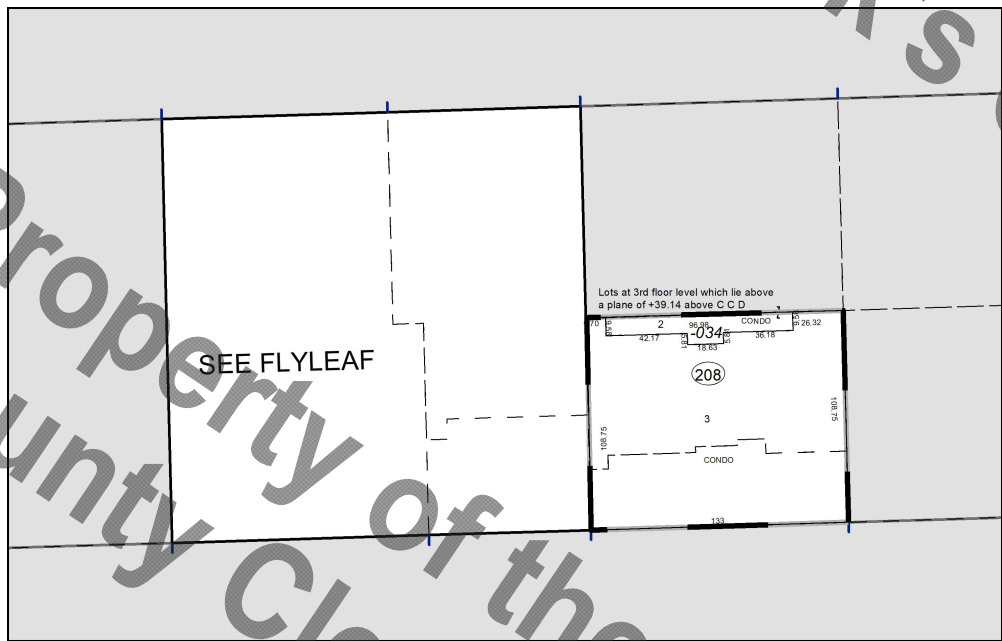




Building: 474, Floor: 2.0



Building: 474, Floor: 3.0



Property of the Cook County Clerk's Office